



**LONE PINE &  
AIRRIESS ACRES**

*Invitational Event*

**FRIDAY, OCTOBER 15, 2021 - VIBANK, SASKATCHEWAN - SALE BEGINS AT 2 PM**

**JUNIOR SHOWMANSHIP BEGINS AT 10:30 AM**



# Sale Day INFORMATION

## SALE STAFF

### Auctioneer

Chris Poley 306-220-5006

### T Bar C Cattle Co. Ltd.

Shane Michelson 403-363-9973  
Ben Wright 519-374-3335

## SALE DAY PHONES

Rob O'Connor 306-550-4890

Trevor Airriess 306-338-7753

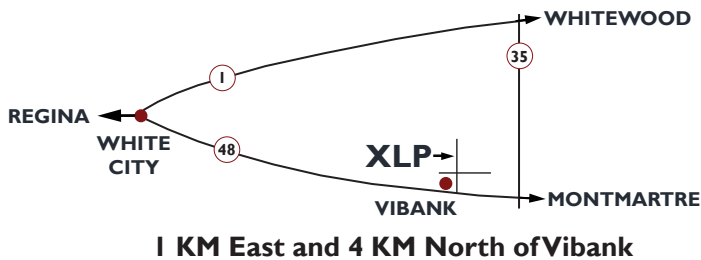
Or any of the Sale Staff

## INSURANCE

### Alameda Agencies

Bonnie Thompson 306-489-2258

## DIRECTIONS TO THE SALE



## ACCOMODATIONS

Ramada Emerald Park/Regina East 306-525-5300

32-28 Great Plains Road, Emerald Park, SK S4L 1B8

Best Western Plus Eastgate Inn & Suites 306-352-7587

3840 E Eastgate Drive, Regina, SK S4P 2Z4

## TRUCKING

H.S. Knill Co. Ltd. 877-442-3106

## ONLINE BIDDING AVAILABLE



## Be Part Of The Saskatchewan Sweep Steaks

Friday, October 15 - Lone Pine & Airriess Acres Invitational Event - 2 PM

Saturday, October 16 - ANL/Glenlees Polled Herefords & Guests - 1 PM

Saturday, October 16 - C&T Cattle Co. & Guests "Take The Next Step" Sale - 1 PM

Sunday, October 17 - Blair-Athol/Haroldson's & Friends - 1 PM

Monday, October 18 - Square D Annual Production Sale - 1 PM



## FROM THE DESK AT T BAR...

Welcome to the Lone Pine & Airriess Acres Invitational Polled Hereford Event, Friday, October 15, 2021, at the Lone Pine headquarters, Vibank, Saskatchewan. The Invitational starts the "Saskatchewan Sweep Steaks" weekend with five great sales in four days. This sale is unique as it combines the offering of a top set of cattle along with a junior component to make it a true family event. Rob O'Conner's roots run deep... starting when he was a budding junior member, and his influence has affected many breeding programs in the livestock industry.

Trevor and Sara Airriess are raising a young family while making a living on their mixed farming operation. They have compiled a strong foundation of Hereford Genetics for you to share in.

Both host families are active members of the Canadian Junior Hereford Association and will have great influence in the Hereford breed for generations to come.

The lineup for the 2021 Invitational is truly exciting! The 2021 models will be competitive whether they are singles or with their mothers and you can be assured that they're selections will fit your front pasture. Be sure to check out the herd bull prospects as they are genetically unique and powerful in phenotype. The bred yearlings are diverse, broody with many carrying early services and suitable for all types of programs at all types of budgets.

Their guests have put forth their finest to enhance the depth of the sale offering. Crittenden Land & Cattle offer a pick of the heifer calf crop and a unique herd sire prospect, Paul from Rock-N-Roll offers his top heifer calves and with his dairy background you can be sure that they will be sound and highly maternal. For those who attended Bonanza 2021, you will be aware of the HMS Hi-Cliffe program and their dominance in Camrose.

Your hosts are great young families dedicated to youth and the Polled Hereford breed. Feel free to stop by anytime prior the sale and view their breeding programs and their sale offering in their home natural environment. Don't hesitate to give any of them a call to discuss the cattle and those that would suit your breeding needs.

Plan to be with us in person, online or on the phone to start an exciting Polled Hereford Weekend. During these times, feel free to give any of the T Bar C Team a call and we will be pleased to assist you in a professional and confidential manner with your selections.

Chris Poley



CHRIS POLEY  
306-220-5006



SHANE MICHELSON  
403-363-9973



BEN WRIGHT  
519-374-3335

# Welcome FROM YOUR HOSTS

Dear Hereford Friends and Fellow Cattlemen,

Welcome to the 2021 edition of the Lone Pine/Airress Acres Invitational Event. The 2020 sale was a wonderful success and we are looking forward to showing you our sale group this year. Even though the past 12 months have been a great challenge as we have had to deal with both the continuing COVID-19 pandemic and a prairie wide drought, we and all the sale consignors have continued to invest in our genetic programs by adding new herd bulls and AI investments. I think you will find the offering to be highest quality of seedstock in the area.

The roots of this sale remains as it always has, to support breeders with smaller herds and those who are beginning their business as Hereford breeders. I want to recognize our sale partners Trevor and Sara Airress. It is exciting to be involved with people who are so invested in this business and breed. They are a great family and we really appreciate their partnership.



Again this year as a part of the Invitational event will be a Showmanship competition for junior and 4-H members. This will be an opportunity for people 21 and younger to participate in a competition. Its an opportunity to compete with like minded livestock people to win prizes and sale credits. Coming in 2022 we will be adding a futurity show where the competitors from 2020 and 2021 can bring back their past purchases to compete for even more!

Of course I have to acknowledge that the COVID -19 pandemic has continued to affect how this country and the world is operating in the short term. We will be following regulations applicable to the Health Region and Province of Saskatchewan. We are fortunate to have a provincial government who recognizes the importance of on farm livestock sales and has set out rules that allows them to continue. But what is telling about this situation is that the agriculture industry is essential and in fact calf prices have remained stronger than most people would have expected. This will lead to a strong fall run and a stronger replacement market.

We hope to see you on October 15. But if you aren't comfortable with attending the sale in person we will be broadcast online and videos of the sale lots will be available prior to the sale. If you would prefer to see the cattle in person we would be happy to arrange a private tour prior to the sale. If we can assist you in anyway please feel free to contact us or any of the consignors or sales staff.

Sincerely

*Rob & Dawn & Connor*

## Showmanship COMPETITION

We are inviting people 21 years old and younger to participate in the second Lone Pine/ Airriess Acres Invitational Event Showmanship Competition. And we supply the heifer to show!

Prizes include:

Division Champion Showman - \$250 Credit in Sale + \$100 Cash prize + gift

Reserve Division Champion Showman - \$250 Credit in Sale + \$50 Cash prize + gift

All other participants - \$ 100 Credit in Sale + gift

Show Rules:

Show begins at 10:30am Friday, October 16.

Heifers to be used in the Showmanship classes will be provided by the consignors. Consignors will designate available heifers. Participants will choose the heifer to show on a first come first serve basis.

There will be three age divisions. Junior, Intermediate and Senior Divisions will be offered. Age divisions will be as of January 1 2020:

Junior: 9 years old and under

Intermediate: 10-15 years old

Senior: 16-21 years old

Sale management has the right to alter divisions to allow for fair play between participants.

Participants will be allowed to fit their chosen show heifer.

The participant must supply their own show cane, comb, show halter and grooming supplies.

Family of the consignors will be allowed to compete but non-consigning participants will be given precedence when choosing the show heifers.

Sale Credits won can only be applied if the purchased animal is transferred into the participant's name.

This sale is also a participant in the CJHA Heifer Lottery. Winners of the lottery can combine their lottery winnings with their showmanship winnings.



# LONE PINE CATTLE SERVICES

# REFERENCE SIRES



## Ref A RVP 8Y GLOBETROTTER ET I37G {DLF HYF IEF MSUDF MDF}

PC03061264	28/02/2019	RVP I37G	POLLED
SHFWONDER M326 W18 ET		KCF BENNETT 3008 M326	
<b>NJW 73S W18 HOMEGROWN 8Y ET {DLF HYF IEF MDC}</b>		SHF GOVERNESS 236G L37	
NJW P606 72N DAYDREAM 73S		PW VICTOR BOOMER P606	
		NJW 94J DEW 72N	
SHF RIB EYE M326 R117		KCF BENNETT 3008 M326	
<b>NJW 73S R117 DREAMIN I49X {DLF HYF IEF}</b>		HVH MISS HUDSON 83K 8M	
NJW P606 72N DAYDREAM 73S		PW VICTOR BOOMER P606	
		NJW 94J DEW 72N	
<b>EPDS: BW: 2.5 // WW: 48.4 // YW: 80.8 // MM: 38.5 // TM: 62.7</b>			

Our 2 yr old herd sire. Purchased at the River Valley production sale as a calf. His genetic base is Ned and Jan Ward breeding. This masculine individual has added muscle expression while maintaining a lower birth weight in his calves. Maternally he has one of most prolific cows in his pedigree, NJW Daydream 73S, twice. His dam was #2 in the country for MPI when we bought him and she is still in the top 15.



## Ref B NJW 11B 6589 AUTHORITY 57G ET

PC03079615	07/02/2019	11B57G	POLLED
R LEADER 6964		HYALITE ON TARGET 936	
<b>/S MANDATE 66589 ET {DLF HYF IEF MDF}</b>		R MISS REVOLUTION 1009	
/S LADY DOMINO 0158X		SHF RIB EYE M326 R117	
		/S LADY DOMINO 652S	
LJR 023R WHITMORE 10W		KJ C&L J119 LOGIC 023R ET	
<b>NJW 79Z 10W RITA 11B</b>		LJR MICKEY 278N	
BW 91H 100W RITA 79Z ET		NJW 73S M326 TRUST 100W ET	
		REMITALL RITA 91H	
<b>EPDS: BW: 1.5 // WW: 74.1 // YW: 111.0 // MM: 29.3 // TM: 66.4</b>			

When looking for a new bull to use in our AI program I was intrigued by Authority. So when the opportunity to invest came we dove in. His phenotype is awesome. His EPD profile is leading edge. His service is a sale feature



## Ref C KIRBY-LONEPINE PRINCE ET 10E {DLF HYF IEF MSUDF}

PC03049243	10/07/2017	LBK 10E	POLLED
ANLA XLP ACTION ET 75Z		TH 89T 743 UNTAPPED 425X ET	
<b>XLP 75Z KELSEY 55B {DLF HYF IEF}</b>		ANL PBG 3N SPLENDOUR 143T	
XLP 101S REESE 5Y		BNMHPH 13P HEAT 101S	
		HAROLDSON'S JVJ REESE 19D 5S	
TH 71U 719T MR HEREFORD 11X		TH 122 711VICTOR 719T	
<b>KIRBY-LONEPINE SYBIL 403A {DLF HYF IEF MSUDF}</b>		TH 7N 45P RITA 71U	
KIRBY-LONEPINE 5L SYBIL 403T		STAR OBF BOGART 5L	
		KIRBY-LONEPINE 76J SYBIL 403L	
<b>EPDS: BW: 2.2 // WW: 45.1 // YW: 65.6 // MM: 22.2 // TM: 44.8</b>			

Prince 10E is the Kelsey son we chose to use in our own herd. And we are glad we did. In his first calf crop he has proven to sire calves with many qualities. From the start they are born with moderate birth weights. You quickly notice that they are nicely pigmented, dark red with attractive markings. As you read through his pedigree you will notice several generations of Lone Pine bred cattle. His dam is a member of the Sybil cow family. It's one of our most prolific female lines. We have shown two flush sisters at Agribition and one was the high seller in last year's sale.



## REFERENCE SIRES



### Ref D **KIRBY-LONEPINE TOP BRASS 176F {DLF HYF IEF MSUDF}**

PC03049169	16/01/2018	LBK 176F	POLLED
TH 89T 743 UNTAPPED 425X ET	CRR ABOUT TIME 743		
<b>ANLA XLP ACTION ET 75Z {DLF HYF IEF}</b>	TH 16G 20N GEMINI 89T		
ANL PBG 3N SPLENDOUR 143T	ANL SBS 122L CATTLELAC 3N		
	ANL 8E SPLENDOUR 3M		
MAPLE-DALE UNLEASHED ET 6Z	TRIARA UNLEASHED 893U		
<b>KIRBY-LONEPINE 6Z LEXUS 765B</b>	CHURCHILL LADY 3117		
SQUARE-D LEXUS 765P	SQUARE-D STINGER 779K		
	SQUARE-D JAYNE 565K		
<b>EPDS: BW: 4.7 // WW: 55.2 // YW: 85.6 // MM: 24.5 // TM: 52.1</b>			

The Procyk family paid \$14,250 for Top Brass as the high seller in our bull sale as a yearling. We shared use of the bull and we like what we see.

### Ref F **XLP THUNDER 41F {DLF HYF IEF MSUDF}**

PC03049226	10/02/2018	XLP 41F	POLLED
CHURCHILL RED BULL 200Z	CHURCHILL SENSATION 028X		
<b>CHURCHILL KICKSTART 501C ET</b>	CHURCHILL LADY 002X ET		
HVH OKSANA 4L 33N	HVH KREMLIN 57F 108K		
	HVH GENETIC QUEEN 53H 4L		
MHPH 101S UMPIRE 118U	BNMHPH 13P HEAT 101S		
<b>PCL TORI 118U 41A {DLF HYF IEF}</b>	MHPH MS 68M NITA 1112R		
GLENROSE 3N TORI 116T	ANL SBS 122L CATTLELAC 3N		
	GLENROSE 62D JACQUI 50J		
<b>EPDS: BW: 1.2 // WW: 61.0 // YW: 93.3 // MM: 19.0 // TM: 49.5</b>			

This bull is smooth made. His body flows from a masculine head, his long neck, into a wide and deep body to his very large and correct testicles. Thunder's maternal sister was the high seller as a calf at the Medonte Highlands Autumn Alliance sale. His brother was the top selling yearling at our bull sale.



## LONE PINE CATTLE SERVICES



Blast of Action - Sire of Ref Sire E

### Ref E **XLP STAND FOR ACTION 228H**

PC03071173	10/01/2020	XLP 228H	POLLED
ANLA XLP ACTION ET 75Z	TH 89T 743 UNTAPPED 425X ET		
<b>XLP BLAST OF ACTION 243E {DLF HYF IEF MSUDF}</b>	ANL PBG 3N SPLENDOUR 143T		
XLP 101S MORAY 243W	BNMHPH 13P HEAT 101S		
	GLENLEES 417L MARCY 243S		
TH 122 711 VICTOR 521X ET	DRF JWR PRINCEVICTOR 711		
<b>OSF SARAH 521X 228A {DLF HYF IEF}</b>	KBCR 19D DOMINETTE 122		
HAROLDSONS SARAH T100 59Y	SHFTAHOER117T100		
	HAROLDSON'S SARAH 68M 59T		
<b>EPDS: BW: 3.2 // WW: 51.0 // YW: 84.0 // MM: 22.7 // TM: 48.2</b>			

As you probably know we've had great success with ANLA XLP ACTION ET 75Z and it continues through our use of his sons and grandsons. This bull's dam Sarah 228A has been an excellent producer and I kept this bull to increase her genetics into the herd. See him on display in bull pen alley at Agribition.

### Ref G **KIRBY-LONEPINE HEADSTART 2H**

PC03074380	21/0/2020	LPK 2H	POLLED
CHURCHILL RED BULL 200Z	CHURCHILL SENSATION 028X		
<b>CHURCHILL KICKSTART 501C ET</b>	CHURCHILL LADY 002X ET		
HVH OKSANA 4L 33N	HVH KREMLIN 57F 108K		
	HVH GENETIC QUEEN 53H 4L		
STAR OBF BOGART 5L	CS BOOMER 29F		
<b>KIRBY-LONEPINE 5L SYBIL 403T {DLF HYF IEF MSUDF}</b>	NJW 1Y LARIAT 41E		
KIRBY-LONEPINE 76J SYBIL 403L	DOUBLE-U JACKPOT 76J		
	WTK 21F SYBIL 109J		
<b>EPDS: BW: 1.2 // WW: 61.0 // YW: 93.3 // MM: 19.0 // TM: 49.5</b>			

Also sired by Churchill Kickstart. His dam is Sybil 403T. The same cow family that produced Hoffman's Perfecto bull. 2H is very deep bodied. He is also extremely dark coloured and well pigmented. See him on sale day or Agribition.



Kickstart - Sire of Ref Sire F & G



# LONE PINE CATTLE SERVICES



## Lot I KIRBY-LONEPINE I37G SYBIL 403J

PC03086300	14/02/2021	LPK 403J	POLLED
NJW 73S W18 HOMEGROWN 8Y ET	SHFWONDER M326 W18 ET		
RVP 8Y GLOBETROTTER ET I37G (DLF HYF IEF MSUDF MDF)	NJW P606 72N DAYDREAM 73S		
NJW 73S R117 DREAMIN 149X	SHF RIB EYE M326 R117		
	NJW P606 72N DAYDREAM 73S		
	GHC PREMIER 152M		
XLP KPH LCPHTRIBUTE ET 707B	CIRCLE-D 832W WILMA 19F		
<b>KIRBY-LONEPINE SYBIL 403E</b>	STAR OBF BOGART 5L		
KIRBY-LONEPINE 5L SYBIL 403T	KIRBY-LONEPINE 76J SYBIL 403L		
EPDS: BW: 2.4 // WW: 47.8 // YW: 77.1 // MM: 28.8 // TM: 57.6			

### BW: 88 lbs.

Here is a well muscled heifer that comes from a great cow family. Genetics in her pedigree have influenced many of the top breeders in North America including Hoffman's and NJW. Sells choice with her dam. Halter broke. Consigned with Kirby Polled Herefords

## Lot IA KIRBY-LONEPINE SYBIL 403E

PC03039942	04/01/2017	LPK 403E	POLLED
GHC PREMIER 152M	WTK 75A CONTINENTAL 66F		
XLP KPH LCPHTRIBUTE ET 707B (DLF HYF IEF MSUDF)	GL 127U KAREN 25Y		
CIRCLE-D 832W WILMA 19F	CIRCLE-D WRANGLER 832W		
	TWIN J MISS STK 167R		
	CS BOOMER 29F		
STAR OBF BOGART 5L	NJW 1Y LARIAT 41E		
<b>KIRBY-LONEPINE 5L SYBIL 403T (DLF HYF IEF MSUDF)</b>	DOUBLE-U JACKPOT 76J		
KIRBY-LONEPINE 76J SYBIL 403L	WTK 21F SYBIL 109J		
EPDS: BW: 2.3 // WW: 46.1 // YW: 73.4 // MM: 19.3 // TM: 42.4			

Last year's sale featured a Tribute cow. She was one of the most attractive, perfect uddered cows we've offered and she was one of the high sellers. 403E follows that cow and represents her sire very well. Consigned with Kirby Polled Herefords  
**AI Bred to H RW ALL IN 7165 ET on Apr. 5, 2021**  
**Exposed to RVP 8Y Globe Trotter ET I37G June 18, 2021 - Sept. 9, 2021**



Maternal Brother - Lot IA



**XLP KPH LCPHTRIBUTE ET 707B**  
Sire- Lot IA





# INTRODUCING

## RVP 8Y **GLOBE TROTTER** ET 137G

I want to start the catalogue with some of the first calves sired by our Junior Herdsire "Globe Trotter". We purchased this bull in the River Valley production sale where he was featured as lot 1. He is full of some of NJW Polled Herefords top genetics including their great "DayDream" cow twice. What better way to start the sale.



### Lot 2 **KIRBY-LONEPINE 137G SHIRAZ 44J**

C03084575 16/02/2021 LPK 44J POLLED

NJW 73S W18 HOMEGROWN 8Y ET	SHF WONDER M326 W18 ET
<b>RVP 8Y GLOBETROTTER ET 137G (DLF HYF IEF MSUDF MDF)</b>	NJW P606 72N DAYDREAM 73S
NJW 73S R117 DREAMIN 149X	SHF RIB EYE M326 R117
	NJW P606 72N DAYDREAM 73S
M-R 27A 403A POWERPLAY 4C	WLB WINCHESTER POWERBALL 27A
<b>M-R 4C SHIRAZ 44E</b>	M-R 332W TOTAL ACCENT 403A
M-R 75Z HIGH SOCIETY 44C	ANLA XLP ACTION ET 75Z
	XLP CLF HIGH SOCIETY ET 44T

EPDS: BW: 2.5 // WW: 52.4 // YW: 84.4 // MM: 29.7 // TM: 55.9

**BW: 74 lbs.**

This is a well constructed heifer. She has already been noticed by those who have walked through the pasture. She'll compete at the shows just like her dam and granddam did at Agribition and Lloyd Ex. Consigned with Kirby Polled Herefords Halter Broke





# LONE PINE CATTLE SERVICES



RVP 8Y GLOBETROTTER ET I37G  
Sire - Lot 3

## Lot 3 KIRBY-LONEPINE MANHATTEN I68J

PC03084574	16/01/2021	LPK I68J	POLLED
NJW 73S W18 HOMEGROWN 8Y ET	SHFWONDER M326 W18 ET		
RVP 8Y GLOBETROTTER ET I37G (DLF HYF IEF MSUDF MDF)	NJW P606 72N DAYDREAM 73S		
NJW 73S R117 DREAMIN I49X	SHF RIB EYE M326 R117		
	NJW P606 72N DAYDREAM 73S		
	TH 89T 743 UNTAPPED 425X ET		
ANLA XLP ACTION ET 75Z	ANL PBG 3N SPLENDOUR I43T		
KIRBY-LONEPINE BLANCHE I68E	RVP STAR 533P CAN-AM ET 57U		
XLP CLF 57U BLANCHE I68Z P	XLP I5L BLANCHE I68R		

EPDS: BW: 3.9 // WW: 51.4 // YW: 86.5 // MM: 28.5 // TM: 54.2

### BW: 92 lbs. Born Unassisted

I68J is a high performance bull calf will catch your attention. His masculinity and testicular development is impressive. His length of spine is off the charts. When you come see him he's tame enough that you can give him a pet...Hereford docility on demonstration!  
Selling Choice with his dam  
Halter broke  
Consigned with Kirby Polled Herefords

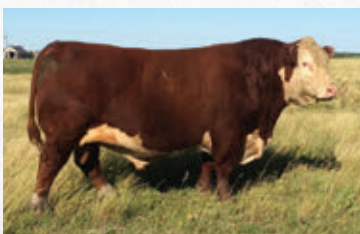
## Lot 3A KIRBY-LONEPINE BLANCHE I68E

C03039947	15/01/2017	LPK I68E	DEHORND
TH 89T 743 UNTAPPED 425X ET	CRR ABOUT TIME 743		
ANLA XLP ACTION ET 75Z (DLF HYF IEF)	TH 16G 20N GEMINI 89T		
ANL PBG 3N SPLENDOUR I43T	ANL SBS I22L CATTLELAC 3N		
	ANL 8E SPLENDOUR 3M		
	STAR BRIGHT FUTURE 533P ET		
RVP STAR 533P CAN-AM ET 57U	STAR BONNIE BETH 54N		
XLP CLF 57U BLANCHE I68Z	DUNROBIN HOLLYWOOD I5L		
XLP I5L BLANCHE I68R	WTK I35Y BLANCHE I68E		

EPDS: BW: 4.6 // WW: 52.4 // YW: 88.9 // MM: 18.5 // TM: 44.7

### BW: 93 lbs.

Blanche is a very attractive cow with a picture perfect udder. She works hard at raising big calves just like all the cows of this family.  
Dehorned  
Consigned with Kirby Polled Herefords  
AI bred to NJW I1B 6589 AUTHORITY 57G ET on May 27, 2021  
Exposed to RVP 8Y Globe Trotter ET I37G June 18 - Sept 9, 2021



ANLA XLP ACTION ET 75Z  
Sire - Lot 3A





# LONE PINE CATTLE SERVICES

Lot 4

## XLP 190B MANDY 117J

APPLIED FOR	01/01/2021	XLP 117J	POLLED
NJW 73S W18 HOMETOWN 10Y ET		SHF WONDER M326 W18 ET	
<b>HARVIE COOL WATER ET 190B (DLF HYF IEF MDF)</b>		NJW P606 72N DAYDREAM 73S	
HARVIE MS FIREFLY 65P		HARVIE LADIES MAN 4L	
		HARVIE MISS FIREFLY 51F	
XLP 38Z POLLED SCRIPT 355B		XLP 91S DOC HOLIDAY 38Z	
<b>XLP 355B MANDY 117G</b>		XLP 187 JULIET 355Y	
GHC LRL MISS SYBIL 117D		GHC MACH 1 25A	
		HAROLDSON'S PHILIS T100 51W	

EPDS: BW: 3.2 // WW: 51.2 // YW: 84.1 // MM: 29.8 // TM: 55.4

**BW: 79 lbs.**

Here is a sale feature. A heifer's first calf! Her dam's maternal sister was last year's sale high selling animal. Her granddam was a feature in the Crittenden spring sale. This calf has already been competitive in the shows, winning her class at the South East Saskatchewan Mark of Excellence Show in August. Halter broke



**XLP Polled Script 355B**  
Maternal Sire - Lot 4



**HARVIE COOL WATER ET 190B**  
Sire - Lots 4 & 5

Lot 5

## XLP Day Dream 730J

APPLIED FOR	06/01/2021	XLP 730J	POLLED
THM DURANGO 4037		CS BOOMER 29F	
<b>HARVIE COOL WATER ET 190B (DLF HYF IEF MDF)</b>		THM 7085 VICTRA 9036	
CRR D03 CASSIE 206		SHF INTERSTATE 20X D03	
		CRR 475E CASSIE 838	
SHF RIB EYE M326 R117		KCF BENNETT 3008 M326	
<b>NJW 73S R117 DREAMIN 149X (DLF HYF IEF)</b>		HVH MISS HUDSON 83K 8M	
NJW P606 72N DAYDREAM 73S		PVVICTOR BOOMER P606	
		NJW 94J DEW 72N	

PE: BW: 0.8 // WW: 46.3 // YW: 76.1 // MM: 33.4 // TM: 56.6

**BW: 68 lbs.**

A dark, well marked Cool Water daughter. She's thick. She's attractive fronted. She's show ring fancy! Another heifer's first calf. Her dam is Globe Trotter's maternal sister. We wouldn't be offering this calf but because we have successfully used Cool Water and Globe Trotter so often that we have the opportunity to offer her. Halter Broke



Lot 6

## XLP B413 Blanche 91IJ

APPLIED FOR	10/01/2021	XLP 91IJ	POLLED
EFBEEF TFL U208 TESTED X651 ET		SHF WONDER M326 W18 ET	
<b>EFBEEF BR VALIDATED B413</b>		NJW P606 72N DAYDREAM 73S	
EFBEEF 4R THYRA Y865		HARVIE LADIES MAN 4L	
		HARVIE MISS FIREFLY 51F	
HAROLDSON'S TOTEM 200Z 5D		XLP 91S DOC HOLIDAY 38Z	
<b>LIAN 5D BLANCHE 119G</b>		XLP 187 JULIET 355Y	
LIAN 100W BLANCHE 113Z		GHC MACH 1 25A	
		HAROLDSON'S PHILIS T100 51W	

PE EPDS: BW: 2.2 // WW: 63 // YW: 97.3 // MM: 31.1 // TM: 62.8

**BW: 73 lbs.**

Here is a smooth made daughter of the maternal and carcass breeding giant EF BEEF Validated. She has a fantastic growth curve. She is also a heifer's first calf. She goes back to the same cow family as lot 1. The same family that produced Canadian bred Denver Champion Bull BOND. Halter Broke



**EFBEEF BR VALIDATED B413**  
Sire - Lot 6



# LONE PINE CATTLE SERVICES



**WHITEHAWK WARRIOR 845C ET**  
Sire - Lot 7



**NJW 73S M326 TRUST 100W ET**  
Maternal Grand sire - Lot 7

*Lot 7*

## XLP 845C NALA 9J

PC03084595	24/01/2021	XLP 9J	POLLED
UPH PROSPECTOR PI52	HUTH PROSPECTOR K085		
<b>WHITEHAWK WARRIOR 845C ET</b>	UPH MANDY M863		
GRANDVIEW CMR 4003 BETHY I15ET	GRANDVIEWVIC H132 23G 4003 ET		
	DJB 46B BETH 1L		
	TH 89T 743 UNTAPPED 425X ET		
ANLA XLP ACTION ET 75Z	ANL PBG 3N SPLENDOUR 143T		
<b>XLP 75Z NALA 9E</b>	NJW 73S M326 TRUST 100W ET		
JHF NALA 9B	XLP CLF 2103 NALA 204U		

EPDS: BW: 3.3 // WW: 65.5 // YW: 105.9 // MM: 35.6 // TM: 68.4

**BW: 79 lbs.**

9J is a gorgeous daughter of White Hawk Warrior. She is short marked and fully pigmented-she has the aesthetics. She is deep bodied and wide topped- she has the carcass appeal. Add in her very reasonable birth weight it's hard not to fall in love with her. Sells Choice with her dam Halter Broke

*Lot 7A*

## XLP 75Z NALA 9E

PC03039935	30/06/2017	XLP 9E	POLLED
TH 89T 743 UNTAPPED 425X ET	CRR ABOUT TIME 743		
<b>ANLA XLP ACTION ET 75Z (DLF HYF IEF)</b>	TH 16G 20N GEMINI 89T		
ANL PBG 3N SPLENDOUR 143T	ANL SBS 122L CATTLELAC 3N		
	ANL 8E SPLENDOUR 3M		
	KCF BENNETT 3008 M326		
NJW 73S M326 TRUST 100W ET	NJW P606 72N DAYDREAM 73S		
<b>JHF NALA 9B</b>	DCCTHOMASTON 2103 ET		
XLP CLF 2103 NALA 204U	BNC 5L NALA 204N		

EPDS: BW: 5.4 // WW: 60.9 // YW: 103.5 // MM: 29.9 // TM: 60.4

This is a daughter of Agribition Reserve Champion bull "ACTION" and maternal grand daughter to USA National Champion Bulls "Trust" and "Pure Gold". Look at the calf at side and you'll know this young cow can offer your herd a great opportunity and she is bred to an outcross bull.

**AI Bred to XLP Polled Script 355B on Apr.3, 2021**



**XLP Polled Script 355B**  
Service Sire - Lot 7A



**ANLA XLP ACTION ET 75Z**  
Sire - Lot 7A





# LONE PINE CATTLE SERVICES



KIRBY-LONEPINE TOP BRASS 176F  
Sire - Lot 8

*Lot* 8

## XLP GILBERT 42J

PC03086294	10/03/2021	XLP 42J	POLLED
ANL A XLP ACTION ET 75Z KIRBY-LONEPINE TOP BRASS 176F (DLF HYF IEF MSUDF) KIRBY-LONEPINE 6Z LEXUS 765B	TH 89T 743 UNTAPPED 425X ET ANL PBG 3N SPLENDOR 143T MAPLE-DALE UNLEASHED ET 6Z SQUARE-D LEXUS 765P	TH 71U 719T MR HEREFORD 11X NJW 8S 4037 DOREEN 108X	
BOYD POWERHOUSE 2028 <b>XLP HEIDI 42C</b> TDP HEIDI 421X ET	TH 71U 719T MR HEREFORD 11X NJW 8S 4037 DOREEN 108X BECKLEY 758P ONTIME 934S ASH HEIDI 39R ET		

EPDS: BW: 3.8 // WW: 53.7 // YW: 85.6 // MM: 25.7 // TM: 52.6

**BW: 100 lbs.**

This March calf has a strong growth curve. His brother was a sale feature in our 2020 bull sale.  
Born Unassisted. He was up and sucking in less than 90 minutes  
Sells choice with his dam

*Lot* 8A

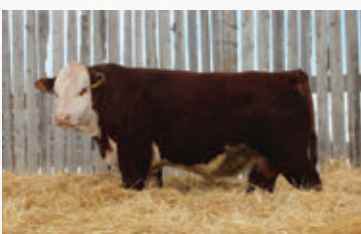
## XLP HEIDI 42C

PC03025047	26/03/2015	XLP 42C	POLLED
TH 71U 719T MR HEREFORD 11X <b>BOYD POWERHOUSE 2028 (DLF HYF IEF)</b> NJW 8S 4037 DOREEN 108X	TH 122 711 VICTOR 719T TH 7N 45P RITA 71U THM DURANGO 4037 NJW 9126J K014 DOREEN 8S ET	BECKLEY 758P ONTIME 934S <b>TDP HEIDI 421X ET</b> ASH HEIDI 39R ET	BECKLEYS LEGEND 242 758P BECKLEYS 122L KAYELA 799P ET PVVICTOR BOOMER P606 BLAIR-ATHOL 20X HEIDI 26J

EPDS: BW: 2.9 // WW: 52.1 // YW: 85.5 // MM: 26.9 // TM: 53.0

I think you will be impressed with this cows udder and overall eye appeal. Plus she has been an excellent producer for us. If this wasn't a drought year we wouldn't be offering this cow.

**AI Service to NJW 11B 6589 AUTHORITY 57G ET on Apr. 28, 2021**  
**Exposed to XLP Thunder 41F from May 28-August 16 2021**



Son - Lot 8A





# LONE PINE CATTLE SERVICES



**XLP 75Z KELSEY 55B**  
Sire - Lot 9



9

## Lot 9 XLP Champaign & Roses 15C

APPLIED FOR	08/01/2021	LPK 15J	POLLED
ANLA XLP ACTION ET 75Z		SHFWONDER M326 W18 ET	
<b>XLP KELSEY 55B</b>		NJW P606 72N DAYDREAM 73S	
XLP REESE 5Y		SHF RIB EYE M326 R117	
		NJW P606 72N DAYDREAM 73S	
		WLB WINCHESTER POWERBALL 27A	
GHRYES 49S 1Y		M-R 332W TOTAL ACCENT 403A	
<b>GHRYES 1Y 15C</b>		ANLA XLP ACTION ET 75Z	
GHR ENDURANCE 745 55U		XLP CLF HIGH SOCIETY ET 44T	
<b>PE EPDS: BW: 2.9 // WW: 52.1 // YW: 80.7 // MM: 22.6 // TM: 48.8</b>			

**BW: 94 lbs.**  
WOW this is a powerful Kelsey daughter. We continue to use Kelsey because he keeps cranking out great calves of both sexes. If you like performance and depth then take a look here.  
Halter Broke  
Sells choice with her dam

## Lot 9A GHRYES 1Y 15C

PC03005969	25/01/2015	GHR 15C	POLLED
MCCOY 55M ABSOLUTE 49S		MCCOY 3J MATADOR 55M	
<b>GHRYES 49S 1Y {DLF HYF IEF}</b>		MCCOY 58G CONNIE 119L	
GHR SEBASTIAN 3S 26W		DOUBLE-U 98K SEBASTIAN 3S	
		GHR REBEL 12R 4T	
		FELTONS 517	
FELTONS ENDURANCE 745		FF PROSPECTITIA 997	
<b>GHR ENDURANCE 745 55U</b>		DOUBLE-U LTD EDITION ET 161L	
DOUBLE-U MISS LTD EDITION 99S		DOUBLE-U MISS COMPLETE ET 303N	
<b>EPDS: BW: -0.1 // WW: 47.5 // YW: 76.5 // MM: 19.6 // TM: 43.4</b>			

This is cool cow with strong maternal pedigree. Most of the valuable genetics in her pedigree aren't available in Canada all that often. She raises'em big!!!  
**AI Bred to XLP Thunder 41F on May 3 2021**



9A



**GHR 15C SON**  
Lexie's Steer - Trooper





Lot 10

**XLP 55B BAMBI 188J**

PC03084552	10/01/2021	XLP 188J	POLLED
ANLA XLP ACTION ET 75Z <b>XLP 75Z KELSEY 55B {DLF HYF IEF}</b> XLP 101S REESE 5Y	TH 89T 743 UNTAPPED 425X ET ANL PBG 3N SPLENDOR 143T BNMMPH 13P HEAT 101S HAROLDSON'S JVJ REESE 19D 5S	CS BOOMER 29F CARLSONS KATHY D2 MHPH 2NWEBSTER 1131W XLP 2103 BAMBI 1008P	

EPDS: BW: 3.6 // WW: 47.6 // YW: 75.9 // MM: 20.5 // TM: 44.3

**BW: 83 lbs.**

Here is another daughter of Kelsey. She has the brood cow look. You'll be impressed by her depth and fleshing ability.  
Halter Broke  
Sells choice with her dam

Lot 10A

**XLP MDF BAMBI 188D**

PC03025011	08/02/2016	XLP 188D	POLLED
CS BOOMER 29F <b>XLP TIMBER ET 2B {DLF HYF IEF}</b> CARLSONS KATHY D2	REMITALL BOOMER 46B CS MISS 1ST FLAG 21A CARLSONS NEW IDEA B46 MEL-JON 680K ROSEANNE 18R	MHPH 2NWEBSTER 1131W <b>XLP MDF 1131W BAMBI 188Y</b> XLP 2103 BAMBI 1008P	WILGOR 55K NORTHEASTERN OL 2N MAY'S EMOTION 45H 112L DCCTHOMASTON 2103 ET MISTERS 209G KENNEDY 1008K

EPDS: BW: 0.6 // WW: 36.4 // YW: 63.4 // MM: 15.4 // TM: 33.6

This has been a really good producing cow. A granddaughter that was sold in dam was shown by Jillian Just at this year's Bonanza.

**Bred to Kirby-Lonepine Top Brass 176F on April 10, 2021**

**Exposed to RVP 8Y Globe Trotter ET 137G June 1- Sept. 9 2021**





# LONE PINE CATTLE SERVICES



## Lot 11 XLP TOP BRASS RITA 138J

PC03086286	10/04/2021	XLP 138J	POLLED
ANLA XLP ACTION ET 75Z	SHFWONDER M326 W18 ET		
KIRBY-LONEPINE TOP BRASS 176F (DLF HYF IEF MSUDF)	ANL PBG 3N SPLENDOR 143T		
KIRBY-LONEPINE 6Z LEXUS 765B	MAPLE-DALE UNLEASHED ET 6Z		
	SQUARE-D LEXUS 765P		
REMITALL-WEST GAME DAY ET 74Y	SHFWONDER M326 W18 ET		
<b>XLP RITA ET 138D (DLF HYF IEF MDC)</b>	REMITALL MARVEL 78T		
BAR-H RITA 38T	REMITALL RESISTOR 252R		
	BAR-H 94I GENNIE 24L		
EPDS: BW: 4.8 // WW: 54.1 // YW: 85.2 // MM: 26.7 // TM: 53.8			

This is a younger calf sired by Top Brass. She is darker in colour and well pigmented.  
 Halter broke  
 Sells choice with her dam

## Lot 11A XLP RITA ET 138D (DLF HYF IEF MDC)

PC03027043	21/05/2016	XLP 138D	POLLED
SHFWONDER M326 W18 ET	KCF BENNETT 3008 M326		
REMITALL-WEST GAME DAY ET 74Y (DLF HYF IEF MDC)	SHF GOVERNESS 236G L37		
REMITALL MARVEL 78T	REMITALL PATRIOT ET 13P		
	REMITALL MAVREL 105N		
REMITALL RESISTOR 252R	REMITALL NATION WIDE ET 93N		
<b>BAR-H RITA 38T (DLF HYF IEF MSUDF)</b>	REMITALL RITA 160L		
BAR-H 94I GENNIE 24L	CRR 65I VINTAGE 94I		
	GKPH 22X GENNIE 23D		
EPDS: BW: 4.9 // WW: 52.9 // YW: 84.8 // MM: 28.9 // TM: 55.4			

This daughter of GameDay has always been a favourite. Her dam Rita 38T was a donor for many years. We will continue this cow family in the herd. Tested MDC.  
**Serviced AI to MHPH 117E HOBBS ET on May 30**  
**Exposed to RVP 8Y GLOBETROTTER ET 137G June 18 - September 9, 2021**



**MHPH 117E HOBBS ET**  
 Service Sire - Lot 11A



**REMITALL-WEST GAME DAY ET 74Y**  
 Sire - Lot 11A







*Lot* 12

**XLP 10E MONA 51J**

PC03084592	09/01/2021	XLP 51J	POLLED
XLP 75Z KELSEY 55B		ANLA XLP ACTION ET 75Z	
<b>KIRBY-LONEPINE PRINCE ET 10E {DLF HYF IEF MSUDF}</b>		XLP 101S REESE 5Y	
KIRBY-LONEPINE SYBIL 403A		TH 71U 719T MR HEREFORD 11X	
		KIRBY-LONEPINE 5L SYBIL 403T	
		BNMHPH 13P HEAT 101S	
REMITALL HEATER 161U		RU 2M DEBRA 141P	
<b>BLAIR-ATHOL H MONA 51A</b>		BLAIR-ATHOL BOND DIRECT 103P	
BLAIR-ATHOL 103 MONA 30U		EASTON QUEEN 1J	

EPDS: BW: 1.3 // WW: 44.7 // YW: 69.7 // MM: 21.1 // TM: 43.5

**BW: 67 lbs.**

I really like this daughter of Prince 10E. She is very complete. I look forward to seeing how she develops for her new owner.

Halter broke

Sells Choice with her dam

*Lot* 12A

**BLAIR-ATHOL H MONA 51A**

PC02984114	12/03/2013	DVL 51A	POLLED
BNMHPH 13P HEAT 101S		REMITALL PATRIOT ET 13P	
<b>REMITALL HEATER 161U {DLF HYF IEF}</b>		ANL PBG 29F BONNIE 21P	
RU 2M DEBRA 141P		RU FUTURE PRINCE 2M	
		RU 153C DEBRA 41M	
		GLENLEES 75A BONDMAN 26J	
BLAIR-ATHOL BOND DIRECT 103P		RU 65F LATEX 47L	
<b>BLAIR-ATHOL 103 MONA 30U</b>		EASTON 20X QUINN 12D	
EASTON QUEEN 1J		TOZAK MONA 33A	

EPDS: BW: 5.1 // WW: 56.1 // YW: 93.8 // MM: 19.9 // TM: 48.0

I have been a fan of the Blair Athol herdsire "Heater". I have purchased several daughters and they all worked. I am retaining daughters of this cow in the herd. Exposed to RVP 8Y GLOBE TROTTER ET 137G from June 1 - Sept. 9, 2021 Observed Bred on June 21.





# LONE PINE CATTLE SERVICES



**XLP ACTION JACKSON500E**  
Sire - Lot 13



Maternal Brother - Lot 13A

## Lot 13 **XLP NIGHTINGALE 721J**

PC03086287	24/03/2021	XLP 721J	POLLED
ANL A XLP ACTION ET 75Z	TH 89T 743 UNTAPPED 425X ET		
<b>XLP ACTION JACKSON 500E (DLF HYF IEF MSUDF)</b>	ANL PBG 3N SPLENDOUR 143T		
XLP 101S REESE 500Y	BNMHPH 13P HEAT 101S		
	HAROLDSON'S JVJ REESE 19D 55		
	KSU BOUNTY HUNTER 611		
BIG-GULLY 611 BOUNTY 517U	BIG-GULLY GOLD DUST LASSY 217R		
<b>XLP NIGHTINGALE 721D</b>	NS LAKES KILO 002		
XLP 002 NIGHTINGALE ET 721U	ELM-LODGE 10C NIGHTINGALE 21N		
<b>EPDS: BW: 6.5 // WW: 58.5 // YW: 98.7 // MM: 24.1 // TM: 53.4</b>			

**BW: 94 lbs.**

A late March calf. She is very attractive to the eye. Her sire is a full brother to Agribition Reserve Sr. Heifer Calf Champion Reese.  
Halter Broke  
Sells Choice with her dam

## Lot 13A **XLP NIGHTINGALE 721D**

C03023233	01/02/2013	XLP 721D	DEHORNED
KSU BOUNTY HUNTER 611	KJ BJ BOUNTY HUNTER 741P		
<b>BIG-GULLY 611 BOUNTY 517U (DLF HYF IEF MSUDF)</b>	KSU MISS 6052F 311		
BIG-GULLY GOLD DUST LASSY 217R	C PURE GOLD 1117		
	BIG-GULLY 5G DUSTER LASSY 217L		
	JSF 37 271 DEVO 23C		
NS LAKES KILO 002	GK APOLLONIA 834Z		
<b>XLP 002 NIGHTINGALE ET 721U (DLF HYF IEF)</b>	REMITALL ONLINE 122L		
ELM-LODGE 10C NIGHTINGALE 21N	ROXWOOD CHARITY 10C		
<b>EPDS: BW: 6.4 // WW: 55.6 // YW: 88.1 // MM: 18.9 // TM: 46.7</b>			

This is a daughter of Agribition Supreme Champion bull "Bounty". Her maternal brother was also an Agribition class winner that was sold to Semex for European semen sales.  
**Exposed to RVP 8Y GLOBE TROTTER ET 137G from June 1- Sept.9, 2021**  
**Observed bred on June 5**

## Lot 14 **XLP 517U SARAH 228F**

PC03049164	017/01/2018	XLP 228F	POLLED
KSU BOUNTY HUNTER 611	KJ BJ BOUNTY HUNTER 741P		
<b>BIG-GULLY 611 BOUNTY 517U (DLF HYF IEF MSUDF)</b>	KSU MISS 6052F 311		
BIG-GULLY GOLD DUST LASSY 217R	C PURE GOLD 1117		
	BIG-GULLY 5G DUSTER LASSY 217L		
	DRF JWR PRINCEVICTOR 71		
TH 12271VICTOR 521X ET	KBCR 19D DOMINETTE 122		
<b>OSF SARAH 521X 228A (DLF HYF IEF)</b>	SHFTAHOER117T100		
HAROLDSONS SARAH T100 59Y	HAROLDSON'S SARAH 68M 59T		
<b>EPDS: BW: 5.7 // WW: 57.7 // YW: 91.1 // MM: 21.4 // TM: 50.3</b>			

Another Daughter of "Bounty". As a calf she was shown successfully at Beef A Rama and the SE Sask Mark of Excellence Show where she won her class both times. Unfortunately we lost her calf at 2 months of age. Her dam and sisters continue to work in the herd.  
Halter Broke  
**Exposed to KIRBY-LONE PINE PRINCE ET 10E May 15 - Sept.9 2021.**



**BIG GULLY BOUNTY**  
Sire - Lots 13A & 14





*Lot 15*

**XLP 41F RITA 132J**

PC03086289	03/05/2021	XLP 132J	POLLED
CHURCHILL KICKSTART 501C ET		CHURCHILL RED BULL 200Z	
<b>XLP THUNDER 41F {DLF HYF IEF MSUDF}</b>		HVH OKSANA 4L 33N	
PCL TORI 118U 41A		MHPH 101S UMPIRE 118U	
		GLENROSE 3N TORI 116T	
		NJW 73S M326 TRUST 100W ET	
NJW 78PTWENTYTWELVE 190Z ET		NJW BW LADYSPORT DEW 78P ET	
<b>XLP RITA 38T ET 132F {DLF HYF IEF MSUDF}</b>		REMITALL RESISTOR 252R	
BAR-H RITA 38T		BAR-H 94I GENNIE 24L	

EPDS: BW: 3.2 // WW: 56.3 // YW: 80.4 // MM: 17.9 // TM: 43.6

**BW: 85 lbs.**

I'm very impressed by this May born calf. She will be very competitive in the younger classes at the 2022 shows. She is a great example of why we will continue to use THUNDER 41F as a herd bull.

Halter Broke  
Sells Choice with her dam

*Lot 15A* **XLP RITA 38T ET 132F {DLF HYF IEF MSUDF}**

PC03052952	08/01/2018	XLP 132F	POLLED
NJW 73S M326 TRUST 100W ET		KCF BENNETT 3008 M326	
<b>NJW 78P TWENTYTWELVE 190Z ET</b>		NJW P606 72N DAYDREAM 73S	
NJW BW LADYSPORT DEW 78P ET		RU 20X BOULDER 57G	
		SADDLE-VALLEY LADYSPORT 120J	
		REMITALL NATION WIDE ET 93N	
REMITALL RESISTOR 252R		REMITALL RITA 160L	
<b>BAR-H RITA 38T {DLF HYF IEF MSUDF}</b>		CRR 65I VINTAGE 94I	
BAR-H 94I GENNIE 24L		GKPH 22X GENNIE 23D	

EPDS: BW: 5.1 // WW: 41.6 // YW: 67.4 // MM: 16.8 // TM: 37.6

This is a wonderfully pigmented and short marked cow. You will love her milk flow. She is a great representative of the RITA family. We are retaining her 2020 born daughter.

**Exposed to RVP 8Y GLOBETROTTER ET 137G June 1- Sept 9, 2021**



**NJW 78PTWENTYTWELVE 190Z ET**  
Sire - Lot 15A



# LONE PINE CATTLE SERVICES



16



**MOHICAN THM EXCEDE Z426**  
Sire - Lot 16

## Lot 16 KIRBY-LONEPINE UNIQUE 136H

PC03071180	04/01/2020	LPK 136H	POLLED
TH 133U 719T UPGRADE 69X <b>MOHICAN THM EXCEDE Z426 (MDF)</b> NJW M326 UNFORGETTABLE 76W ET	TH 122 711VICTOR 719T TH 145 103R MEGAN 133U KCF BENNETT 3008 M326 NJW P606 72N DAYDREAM 73S	TH 122 711VICTOR 719T TH 7N 45P RITA 71U BBSF 101NWRANGLER 29W MISS 87D FORTUNE 707B 67J	
TH 71U 719T MR HEREFORD 11X <b>KIRBY-LONEPINE UNIQUE 36E</b> HF 29W UNIQUE LADY 36Z			

EPDS: BW: 0.2 // WW: 50.5 // YW: 84.9 // MM: 30.9 // TM: 56.2

Unique is a easy fleshing yearling that is sired by Excede. She resembles her grand dam who we purchased from Jay Holmes. This is the same cow family that produced Agribition Supreme Champion Bull HF 4L BEYOND 36N. Look at her awesome Birthweight and Milk EPD's.  
Consigned with Kirby Polled Herefords  
**Serviced AI to NJW 11B 6589 AUTHORITY 57G ET on May 3**  
**Exposed to KIRBY LONE PINE HEADSTART 2H from June 2 to Sept. 9, 2021**

## Lot 18 XLP BOOM BOOM 702H

PC03074392	09/02/2020	XLP 702H	POLLED
ANL A XLP ACTION ET 75Z <b>KIRBY-LONEPINE TOP BRASS 176F (DLF HYF IEF MSUDF)</b> KIRBY-LONEPINE 6Z LEXUS 765B	TH 89T 743 UNTAPPED 425X ET ANL PBG 3N SPLENDOUR 143T MAPLE-DALE UNLEASHED ET 6Z SQUARE-D LEXUS 765P	CRR 719 CATAPULT 109 CRR 435 KELLY 178 SQUARE-D TORTUGA 953T ELM-LODGE 5D WELL BUILT 55W	
CRR 109 OLD SCHOOL 301 <b>ELM-LODGE PRE BA EYECANDY 702E</b> ELM-LODGE ZOOM ZOOM 45Z			

EPDS: BW: 4.4 // WW: 58.8 // YW: 89.6 // MM: 26.2 // TM: 55.6

This daughter of Top Brass has the right look. Her dam's sister was Agribition and Toronto Royal Champion female. Her dam was a class winner at the Agribition Junior Show for Lexie.  
Halter Broke  
**Exposed to Kirby Lone Pine Headstart 2H from June 2 to Sept. 9 2021.**  
**Observed bred June 6**



17



**CHURCHILL KICKSTART**  
Sire - Lot 17

## Lot 17 XLP 501C MARCY 55H

PC03071175	28/02/2020	XLP 55H	POLLED
CHURCHILL RED BULL 200Z <b>CHURCHILL KICKSTART 501C ET</b> HVH OKSANA 4L 33N	CHURCHILL SENSATION 028X CHURCHILL LADY 002X ET HVH KREMLIN 57F 108K HVH GENETIC QUEEN 53H 4L	BNMHPP 13P HEAT 101S <b>XLP 101S MORAY 243W (DLF HYF IEF MSUDF)</b> GLENLEES 417L MARCY 243S	KJ 520EVICTOR 417L GLENLEES 20M MARCY 43P

EPDS: BW: 2.6 // WW: 55.9 // YW: 88.9 // MM: 18.7 // TM: 46.7

This is a real brood cow prospect. Easy fleshing and strong. Several of her maternal brothers have sold into excellent herds including GWG and Warnyca Land and Cattle.  
Halter broke  
**Serviced AI to NJW 11B 6589 AUTHORITY 57G ET on May 3**  
**Exposed to KIRBY LONE PINE HEADSTART 2H from June 2 to Sept. 9, 2021**



18





**ANL AXLP ACTION ET 75Z**  
Sire - Lots 19 & 20

19

*Lot* 19 **XLP APRIL'S ACTION 94H**

PC03074390	06/02/2020	XLP 94H	POLLED
TH 89T 743 UNTAPPED 425X ET		CRR ABOUT TIME 743	
<b>ANLA XLP ACTION ET 75Z (DLF HYF IEF)</b>		TH 16G 20N GEMINI 89T	
ANL PBG 3N SPLENDOUR 143T		ANL SBS 122L CATTLELAC 3N	
		ANL 8E SPLENDOUR 3M	
TDP CROSSOVER Z400		TH 133U 719T UPGRADE 69X	
<b>MOHICAN APRIL 94D</b>		ASH LIL PEANUT 203P	
MOHICAN APRIL Z21		TH 122 711VICTOR 719T	
		-S LADY NASDAQ 722T X25	

EPDS: BW: 3.6 // WW: 53.6 // YW: 91.0 // MM: 25.0 // TM: 51.8

This fully pigmented, deep red, short marked female who has a lot going for her. Her sire "Action" has produced many females that are producing well in our herd. That's why we can offer some for sale but there won't be many more available after this sale.

Halter Broke

**Serviced AI to NJW 11B 6589 AUTHORITY 57G ET on April 14, 2021**  
**Exposed to KIRBY LONE PINE HEADSTART 2H from June 2 to Sept. 9, 2021**

*Lot* 20 **XLP 75Z BAMBI 108H**

PC03074375	17/01/2020	XLP 108H	POLLED
TH 89T 743 UNTAPPED 425X ET		CRR ABOUT TIME 743	
<b>ANLA XLP ACTION ET 75Z (DLF HYF IEF)</b>		TH 16G 20N GEMINI 89T	
ANL PBG 3N SPLENDOUR 143T		ANL SBS 122L CATTLELAC 3N	
		ANL 8E SPLENDOUR 3M	
KIRBY-LONE PINE SANTANA ET 91S		RU 20X GALAXY 58G	
<b>XLP 91S BAMBI 108W</b>		WTK 21F SYBIL 109J	
XLP 2103 BAMBI 1008P		DCC THOMASTON 2103 ET	
		MISTERS 209G KENNEDY 1008K	

EPDS: BW: 2.0 // WW: 43.1 // YW: 72.9 // MM: 26.6 // TM: 48.2

Another Action daughter we are making available for sale. We weren't planning to sell her but at the last minute added her to the offering. So she didn't have the same level of nutrition as her contemporaries in this sale. Her dam has been a valued female in the herd and continues to produce strong calves. We will be retaining a sister to 108H. She is exposed to "Stand for Action" a son of Sarah 228A. This cowfamily has been important for our herd plus O'shea farms and Haroldson's Polled Herefords.

**Exposed to XLP STAND FOR ACTION 228H from May 26- Aug. 16,**



20



Paternal Sibling - Lot 20



# LONE PINE CATTLE SERVICES



KIRBY-LONEPINE PRINCE ET 10E  
Sire - Lots 21 & 22

21

*Lot* 21

**XLP 10E RANDI 732H**

PC03074391	09/02/2020	XLP 732H	POLLED
XLP 75Z KELSEY 55B		ANLA XLP ACTION ET 75Z	
<b>KIRBY-LONEPINE PRINCE ET 10E (DLF HYF IEF MSUDF)</b>		XLP 101S REESE 5Y	
KIRBY-LONEPINE SYBIL 403A		TH 71U 719T MR HEREFORD 11X	
		KIRBY-LONEPINE 5L SYBIL 403T	
TH 745A 7B START ME UP 71D		REMITALL-W START ME UP ET 7B	
<b>ANL 71D RANDI 12C 132F</b>		RANGELINE 11Y MISS WORLD 745A	
ANL 521X RANDI 10A 12C		TH 122 711VICTOR 521X ET	
		ANL P606 RANDI 10A	
EPDS: BW: 2.9 // WW: 54.7 // YW: 83.2 // MM: 22.4 // TM: 49.8			

*Lot* 22

**KIRBY-LONEPINE HI SOCIETY 44H**

PC03086312	17/01/2020	LPK 44H	POLLED
XLP 75Z KELSEY 55B		ANLA XLP ACTION ET 75Z	
<b>KIRBY-LONEPINE PRINCE ET 10E (DLF HYF IEF MSUDF)</b>		XLP 101S REESE 5Y	
KIRBY-LONEPINE SYBIL 403A		TH 71U 719T MR HEREFORD 11X	
		KIRBY-LONEPINE 5L SYBIL 403T	
M-R 27A 403A POWERPLAY 4C		WLB WINCHESTER POWERBALL 27A	
<b>M-R 4C SHIRAZ 44E</b>		M-R 332W TOTAL ACCENT 403A	
M-R 75Z HIGH SOCIETY 44C		ANLA XLP ACTION ET 75Z	
		XLP CLF HIGH SOCIETY ET 44T	
EPDS: BW: 0.5 // WW: 46.1 // YW: 69.0 // MM: 21.5 // TM: 44.6			

A broody, deep bodied female that displays excellent femininity. A heifers first calf. Her dam was junior heifer calf champion at the SE Sask Mark of Excellence show. Sired by Prince 10E.  
**Exposed to KIRBY-LONE PINE HEADSTART 2H from June 2 to Sept.9 2021**

Another deep bodied female who's mother was just a 2 year old. She's easy fleshing and above average in her muscle type and shape. Consigned with Kirby Polled Herefords  
**Exposed to XLP STAND FOR ACTION 228H from May 26 - Aug.16, 2021**  
**Bred to KIRBY-LONE PINE HEADSTART 2H May 5, 2021**



22





Welcome to the Lone Pine-Airriess Acres Invitational Event. First of all we would like to thank Lone Pine for having us in the sale. We appreciate all the work they do in getting this sale put together.

We feel our offering is a very consistent group of heifers. The Heifer calves are out of our top picks and out of strong maternal cows. The breds are all very complete and match in style.

Videos are done through DV auction so make sure to check them out. We look forward to seeing everyone on sale day!

**Trevor & Sara Airriess**



**Lot 23 AIRRIESS-ACRES STELLA 3J {DLF HYF IEF MSDF}**

PC03082094    01/01/2021    TSA 3J    POLLED

NJW 73S M326 TRUST 100W ET  
**BEHM 100W CUDA 504C {MDF}**  
 BEHM R294 JASMAN102Y

ANL C HART100TAHOE86 ET 23B  
**AIRRIESS-ACRES STELLA 19G**  
 GHC C5 MISS SYBIL 131D

KCF BENNETT 3008 M326  
 NJW P606 72N DAYDREAM 73S  
 KCF BENNETT 9126J R294  
 CPH MSWRANGLER 1W  
 SHF TAHOE R117 T100  
 ANL 7N MAPLE 86R  
 GHC MACH 1 25A  
 GHC C5 MISS ATLAS 11B

EPDS: BW: -0.6 // WW: 62.4 // YW: 101.5 // MM: 36.9 // TM: 68.1

Here's a real fancy made heifer. Lots of style and smoothness to this heifer. We have been really impressed with our Cuda calves as they come out small and grow with performance. Stella's dam is a beautiful Tahoe daughter with a well-balanced picture-perfect udder. She is halter broke and ready to show!



# AIRRIESS ACRES



## Lot 24 AIRRIESS-ACRES RIHANNA 48J {DLF HYF IEF MSUDF}

PC03082206	15/01/2021	TSA 48J	POLLED
INNISFAIL WHR X651/723 4013 ET <b>PCL 4013 GAINER 11G</b> PCL REAL LADY 44U 9A	EFBEEF TFL U208 TESTED X651 ET INNISFAIL P230 T723 NJW 98S DURANGO 44U PCL REAL LADY 17T 91Y		
SHF MOORE R117 Z40 <b>GHC C5 MISS HUDSON 47B</b> GHC C5 MISS DYNA 5Z	SHF RIB EYE M326 R117 SHF SOLDIER S66 U121 GHC CONNECTION 38W GHC MISS CALLIE 3X		
EPDS: BW: 3.7 // WW: 63.2 // YW: 92.8 // MM: 30.5 // TM: 62.1			

Here's the first calf crop for Gainer 11g and we are very impressed with our first set of calves. This heifer exhibits everything we were wanting to see out of this bull. Lots of style, depth and red to the ground. Show ring or front-line pasture cow, you decide. Halter broke

## Lot 25 AIRRIESS-ACRES FIONA 61J {DLF HYF IEF MSUDF}

PC03082226	19/01/2021	TSA 61J	POLLED
ANL C HART T100 TAHOE 86 ET 23B <b>GHC FARMER 53F {DLF HYF IEF}</b> GHC MISS GOVERNESS 40B	SHF TAHOE R117 T100 ANL 7N MAPLE 86R SHF MANNING W18 Z22 GHC MISS DONNA 71P		
NJW 73S 22Z MIGHTY MAX 97B ET <b>SQUARE-D MADONNA 74D</b> BLAIR-ATHOL 53 JULIETTE 74B	NJW 67U 28M BIG MAX 22Z NJW P606 72N DAYDREAM 73S BLAIR-ATHOL CLASSIC 53U BLAIR-ATHOL 80P JULIA 11W		
EPDS: BW: 3.1 // WW: 52.4 // YW: 86.6 // MM: 27.7 // TM: 53.9			

Here's the kid's favorite heifer. She is really quiet and easy to work with. Fiona has that big hip to her and smoothness carried right to the front. Red necked and show ready as is halter broke. Her full sister sells as well, and we think they are pretty similar in style. The future looks bright for this heifer!





**Lot 26 AIRRIESS-ACRES WILMA 23H**

PC03070953	11/01/2020	TSA 23H	POLLED
NJW 67U 28M BIG MAX 22Z		GOLDEN-OAK 4J MAXIUM 28M	
<b>NJW 79Z 22Z HEAVY DUTY 72C ET {MDF}</b>		NJW 4037 80L FAITH 67U	
BVW 91H 100W RITA 79Z ET		NJW 735 M326 TRUST 100W ET	
		REMITALL RITA 91H	
GHC MACH 1 25A		BBSF 101N WRANGLER 29W	
<b>GHC C5 MISS SYBIL 78C {DLF HYF IEF}</b>		GHC MISS SUSIE 161T	
GHC C5 MISS DOMINO 143Z		WR DOMINO LAD 309 0614	
		DXB 2J SALSA 91L	
<b>EPDS: BW: 5.3 // WW: 61.5 // YW: 96.9 // MM: 32.9 // TM: 63.7</b>			

Wilma is a freckled faced deep made heifer with the mama cow look to her. We really like the structure and style of this heifer a lot. All the Heavy Duty daughters are deep made with brood cow written all over them.  
**AI to GHC C5 ATTENTION 155E on April 5., 2021**  
**Exposed to PCL 4013 Gainer 11G from May 18 - June 24, 2021.**  
**Preg checked safe to AI.**



**Lot 27 AIRRIESS-ACRES FANTASIA 34H**

PC03070530	15/01/2020	TSA 34H	POLLED
LOEWEN ALL STAR 4A 10C		SHF ALL STAR 42X A19I	
<b>GHC DIVIDEND 48E {DLF HYF IEF MSUDF}</b>		LOEWEN MISS ON TARGET 29X 4A	
GHC MISS ATLAS 85C		GHC ATLAS BEEFMAN 135Z	
		LAMPOR'S 82W VICTORIA 42Z	
GHC CONNECTION 38W		GHC VOLUME III ET 139S	
<b>GHC MISS FANTASIA 102Z</b>		GHC MISS CARLA 167P	
GHC MISS VICTORIA 133X		WR G2VICTOR R59 0706	
		RU 65F GLACE 42N	
<b>EPDS: BW: 1.5 // WW: 40.1 // YW: 60.9 // MM: 26.4 // TM: 46.5</b>			

Fantasia is a correct, smooth made heifer. Very correct in her lines. Off a strong good producing cow.  
**Exposed to PCL 4013 GAINER 11G from May 18 - June 24, 2021.**  
**Observed bred May 21. Preg check confirms date.**



**Lot 28 AIRRIESS-ACRES DESTINY 39H {DLF HYF IEF MSUDF}**

PC03070534	17/01/2020	TSA 39H	POLLED
SHF CANNON Z210 C95		GV CMR X151 MR 847 Z210	
<b>GHC SCHWARZKOPF 125E {DLF HYF IEF MSUDF}</b>		SHF MISTY 33T Y35	
GHC MISS GALAXY ET 208Z		RU 20X GALAXY 58G	
		CARLSONS KATHY D2	
BBSF 101N WRANGLER 29W		BLAIR-ATHOL 13K MAJOR 101N	
<b>GHC C5 MISS UNIQUE 12A</b>		BBSF 19D UNIQUE 1P	
GHC MISS KALLI 161R		JSF 60 LARIET 29L	
		GHC MISS GLORIA 70E	
<b>EPDS: BW: 4.7 // WW: 49.2 // YW: 80.6 // MM: 23.3 // TM: 47.9</b>			

Dark red, deep and structurally correct sums up 39H. Very nice Schwarzkopf heifer and is out of a big deep bodied cow.  
**AI bred SHF HORIZON D287 H022 on May 17, 2021.**  
**Exposed to PCL 4013 GAINER 11G from June 10 - June 24, 2021.**  
**Preg checked safe to AI.**







29

*Lot 29* **AIRRIESS-ACRES HELENA 7H**

PC03070957	02/01/2020	TSA 7H	POLLED
NJW 67U 28M BIG MAX 22Z	GOLDEN-OAK 4J MAXIUM 28M		
<b>NJW 79Z 22Z HEAVY DUTY 72C ET {MDF}</b>	NJW 4037 80L FAITH 67U		
BWV 91H 100W RITA 79Z ET	NJW 73S M326 TRUST 100W ET		
	REMITALL RITA 91H		
SQUARE-D NORTHLINE 129X	TRIPLE-A 14M STOCKY 34S		
<b>SQUARE-D NORA 631A</b>	BNC P58 BACK TOTHE FUTURE 429M		
SQUARE-D GINA 361S	SQUARE-D CONQUER ET 44N		
	SQUARE-D GINNY 161J		

EPDS: BW: 3.2 // WW: 54.0 // YW: 86.8 // MM: 29.8 // TM: 56.8

Helena is a deep bodied broody made heifer. She is an easy doing heifer that we believe will be come a great cow in the herd. Her dam is a moderate cow with a nice udder.  
**AI to TH 57B Z0303 MASTERPLAN 183F on Mar. 28, 2021.**  
**Exposed to PCL 4013 GAINER 11G from May 18- June 24.**  
**Preg checked safe to AI.**

*Lot 30* **AIRRIESS-ACRES KARMA 14H**

PC03070412	05/01/2020	TSA 14H	POLLED
SHF CANNON Z210 C95	GV CMR X151 MR 847 Z210		
<b>GHC SCHWARZKOPF 125E (DLF HYF IEF MSUDF)</b>	SHF MISTY 33T Y35		
GHC MISS GALAXY ET 208Z	RU 20X GALAXY 58G		
	CARLSONS KATHY D2		
GHC POWER-UP 129Y	GHC RITE-WEIGH 49T		
<b>GHC C5 MISS BEAUTY 30B</b>	GHC MISSVICKI 184U		
GHC MISS BLANCHE 37Z	GHC CHUNK 113L		
	GHC MISS MARIE 68U		

EPDS: BW: 2.3 // WW: 53.1 // YW: 80.5 // MM: 23.7 // TM: 50.3

14H is a red neck heifer out of Schwarzkopf with lots of style and depth to her. Comes off a really nice cow from Crittendens. Her maternal sister sold to The Cliffs Farms a few years ago. We are very happy on how this heifer turned out.  
**Exposed to PCL 4013 GAINER 11G from April 23 - June 24, 2021.**  
**Preg checked to calve beginning to mid February 2022.**



30





31

*Lot 31*

**AIRRIESS-ACRES DESTINY 63H**

C03070964	23/01/2020	TSA 63H	POLLED
ANL C HART 100 TAHOE 86 ET 23B <b>GHC FARMER 53F (DLF HYF IEF)</b> GHC MISS GOVERNESS 40B	SHF TAHOE R117T100 ANL 7N MAPLE 86R SHF MANNING W18 Z22 GHC MISS DONNA 71P	K&B SENTINEL 0042X SHF MISS M326 T08 ET MCCOY 55M ABSOLUTE 49S MCCOY 29R MISS MILLIONAIRE 35T	

EPDS: BW: 4.9 // WW: 64.2 // YW: 103.4 // MM: 26.1 // TM: 58.2

Destiny is structurally correct with massive depth and top to this female. She has brood cow written all over her. Comes off a beautiful cow with perfect udder. **AI bred March 29, 2021 to GHC C5 ATTENTION 155E.**  
**Exposed to PCL 4013 GAINER 11G April 19 - June 24, 2021.**  
**Observed bred April 19, 2021 to PCL 4013 GAINER 11G, preg check confirms.**

*Lot 32*

**AIRRIESS-ACRES KYA 65H**

C03072482	27/01/2020	TSA 65H	POLLED
LOEWEN ALL STAR 4A 10C <b>GHC DIVIDEND 48E (DLF HYF IEF MSUDF)</b> GHC MISS ATLAS 85C	SHF ALL STAR 42X A191 LOEWEN MISS ON TARGET 29X 4A GHC ATLAS BEEFMAN 135Z LAMPOR'S 82W VICTORIA 42Z	NJW 73S W18 HOMEGROWN 8Y ET SQUARE-D JAEDEN 257P NJW 73S 22Z MIGHTY MAX 97B ET BLAIR-ATHOL 53 JULIETTE 74B	

EPDS: BW: -0.6 // WW: 40.0 // YW: 61.9 // MM: 30.3 // TM: 50.3

Smooth made heifer with lots of shape to her. Calving ease bred into her. **Exposed to PCL 4013 GAINER 11G May 18 - June 24, 2021.**  
**Observed bred May 28, 2021 Preg check confirms.**



32



# AIRRIESS ACRES



*Lot* 33

## AIRRIESS-ACRES STELLA 67H {MDF}

PC03072483	27/01/2020	TSA 67H	POLLED
LOEWEN ALL STAR 4A 10C	SHF ALL STAR 42X A191	LOEWEN MISS ON TARGET 29X 4A	
<b>GHC DIVIDEND 48E {DLF HYF IEF MSUDF}</b>	GHC ATLAS BEEFMAN 135Z	LAMPOR'T'S 82W VICTORIA 42Z	
GHC MISS ATLAS 85C	TH 122 711 VICTOR 521X ET	MHPH 301W DAINTY 205Y	
MHPH 521X ACTION 106A	<b>MHPH 106A REESE 1021F {DLF HYF IEF MSUDF}</b>	NJW 73S W18 HOMETOWN 10Y ET	
<b>MHPH 106A REESE 1021F {DLF HYF IEF MSUDF}</b>	ANL B&C 10Y REESE 16Y 5D	HAROLDSONS JVJ REESE T100 16Y	

EPDS: BW: -0.2 // WW: 47.7 // YW: 73.1 // MM: 27.3 // TM: 51.2

This is the boys first heifer that they are going to sell. 67H is fancy in her style, with lots of capacity and is very complete in her overall makeup.

**Exposed to PCL 4013 GAINER 11G from March 24 - June 24, 2021.**

**Observed bred April 2, 2021 Preg check confirms.**

*Lot* 34

## AIRRIESS-ACRES TT LACEY 85H {MDF}

PC03072476	14/02/2020	TSA 85H	POLLED
MOHICAN THM EXCEDE Z426	TH 133U 719T UPGRADE 69X	NJW M326 UNFORGETTABLE 76W ET	
<b>MCCOY Z426 LEGACY 9F {DLF HYF IEF MSUDF}</b>	KCF BENNETT ENCORE Z311 ET	MCCOY 5Z CONNIE 92B	
MCCOY Z311 CONNIE 56D	NJW 73S W18 HOMETOWN 8Y ET	WLB 10H MARY 28T	
WLB HOMERUN 8Y 112C	<b>DTHF FOXY 268F {MDC}</b>	HAROLDSON JVJ COVERT 425X 8A	
<b>DTHF FOXY 268F {MDC}</b>	DTHF CANDICE 102C	DTHF MISS RAIDER 34Z	

EPDS: BW: 1.9 // WW: 56.8 // YW: 97.6 // MM: 31.2 // TM: 59.6

Beautifully made red necked freckled faced Legacy heifer. Lots of depth and overall completeness to this heifer. She is a eye catcher when you come into the pen. Owned with Til Toba Polled Herefords.

**AI bred to BG LCC 11B PERFECTO 84F on May 1, 2021.**

**Exposed to PCL 4013 GAINER 11G from May 25 - June 24, 2021.**

**Preg check safe to AI.**





*Lot* **35**

**AIRRIESS-ACRES ESMERALDA 96H**

PC03072479	22/02/2020	TSA 96H	POLLED
ANL C HART 100 TAHOE 86 ET 23B <b>GHC FARMER 53F {DLF HYF IEF}</b> GHC MISS GOVERNESS 40B	SHFTAHOE R117T100 ANL 7N MAPLE 86R SHF MANNING W18 Z22 GHC MISS DONNA 71P		
NJW 73S 22Z MIGHTY MAX 97B ET <b>SQUARE-D MADONNA 74D</b> BLAIR-ATHOL 53 JULIETTE 74B	NJW 67U 28M BIG MAX 22Z NJW P606 72N DAYDREAM 73S BLAIR-ATHOL CLASSIC 53U BLAIR-ATHOL 80P JULIA 11W		
EPDS: BW: 3.1 // WW: 53.6 // YW: 88.1 // MM: 27.0 // TM: 53.8			

Here's a heifer with length, hip and smoothness to her. She is a beautiful made heifer and is out of a really nice moderate cow. Her dam has been producing strong females every year. We sold a bred heifer that is maternal sister to 96H and 61J in our sale last year to Phantom Creek. Be sure to check out her full sister at the sale.

**Exposed to PCL 4013 GAINER 11G from May 25-June 24, 2021.**  
**Observed bred June 3, 2021 preg check confirms.**



*Lot* **36**

**AIRRIESS-ACRES KACEY 98H**

PC03076336	29/01/2020	TSA 96H	POLLED
ANL C HART 100 TAHOE 86 ET 23B <b>GHC FARMER 53F {DLF HYF IEF}</b> GHC MISS GOVERNESS 40B	SHFTAHOE R117T100 ANL 7N MAPLE 86R SHF MANNING W18 Z22 GHC MISS DONNA 71P		
MCCOY 5Z CLASSIFIED 53B <b>C&amp;T AYWON 53B MADISON 1E</b> AYWON 35U MISS MADSEN 50U 19X	MCCOY 743 FACEOFF 5Z MCCOY 95X BRANDY 55Z ANL C P606 ULYSSES 35U MHR MISS 51K MADSEN 153P 50U		
EPDS: BW: 1.4 // WW: 43.3 // YW: 73.0 // MM: 22.8 // TM: 44.5			

Here's a smooth fronted, feminine made heifer that is correct in her lines. 98H is off a really nice made cow.

**AI bred to BOYD 31Z BLUEPRINT 6153 on April 10, 2021.**  
**Exposed to PCL 4013 GAINER 11G from May 18 - June 24, 2021.**  
**Preg check safe to AI.**



*Lot* **37**

**AIRRIESS-ACRES SKYLER 120H**

PC03072481	27/03/2020	TSA 120H	POLLED
LOEWEN ALL STAR 4A 10C <b>GHC DIVIDEND 48E {DLF HYF IEF MSUDF}</b> GHC MISS ATLAS 85C	SHF ALL STAR 42X A191 LOEWEN MISS ON TARGET 29X 4A GHC ATLAS BEEFMAN 135Z LAMPOR'S 82W VICTORIA 42Z		
JSF RELOAD 59U <b>GHC C5 MISS TANGO 84B</b> GHC MISS FANTASIA 7T	DXB 2J TRAILBLAZER 71N JSF 12N CARILLA 112R DOUBLE-U LTD EDITION ET 161L DYNAMITE ACRES FANTASIA 318M		
EPDS: BW: 3.2 // WW: 47.6 // YW: 75.5 // MM: 26.0 // TM: 49.8			

This is the youngest bred heifer we are offering. We really like this heifer. She is goggled eyed and dark. 120H is a smooth made heifer and is out of a big broody cow. We believe this heifer will go on to make a great cow.

**Exposed to PCL 4013 GAINER 11G from March 24 - June 24, 2021.**  
**Preg check confirms mid-January as she was 90-100 days when preg checked July 13, 2021**



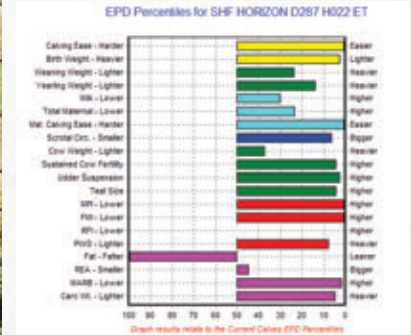


# AIRRIESS ACRES

# REFERENCE SIRES



Our exciting new herd sire that we own with Crittenden Land and Cattle and Sandhills Farms. H022 is a homozygous bull that is unmatched in the breed with calving ease above 17 and yearling weight over 100. This bull is a breed changer! His dam was a high seller at the Sandhills sale this spring. We will have semen for sale later fall. Please contact one of us for details..



## Ref A SHF HORIZON D287 H022 ET {DLF,HYF,IEF,MSUDF,MDF}

P44123593 29/01/2017 H022 POLLED

SHF YORK 19H Y02 MSU MF HUDSON 19H  
 SHF DAYBREAK Y02 D287 ET {CHB,DLF,HYF,IEF,MSUDF} KCF BENNETT 3008 M326  
 SHF MISS M326 T08 ET SHF POSTIVE MISS 73C M15

GERBERANODYNE 001A KCF BENNETT 9126J R294  
 SHF TIME 001A D81 {DLF,HYF,IEF} GERBER 627S HOLLY 096Y  
 SHF TIME 42X A140 K&B SENTINEL 0042X  
 KJ 796P TIMEWISE 006W ET

EPDS: CE: 17.2 BW: -1.2 // WW: 60 // YW: 101 // MM: 28 // TM: 100



## Ref B PCL 4013 GAINER 11G {DLF HYF IEF MSUDF}

C03059038 25/02/2019 DAWM 11G POLLED

EFBEEF TFL U208 TESTED X651 ET EFBEEF FOREMOST U208  
 INNISFAIL WHR X651/723 4013 ET {MDF} EF F745 FRANK P230  
 INNISFAIL P230 T723 INNISFAIL 235 R501 ET

NJW 98S DURANGO 44U THM DURANGO 4037  
 PCL REAL LADY 44U 9A NJW 9126J DEW DOMINO 98S  
 PCL REAL LADY 17T 91Y PCL TORPEDO 10H 17T  
 PCL REAL LADY 23L 35R

EPDS: BW: 0.0 // WW: 60.8 // YW: 85.9 // MM: 33.0 // TM: 63.4



## Ref C GHC SCHWARZKOPF 125E {DLF HYF IEF MSUDF}

C03034144 22/03/2017 AKJA 125E POLLED

GV CMR X151 MR 847 Z210 F REST EASY 847  
 SHF CANNON Z210 C95 GRANDVIEW CMR MS 424 X151 ET  
 SHF MISTY 33T Y35 LOEWEN M326 SIR 33T  
 HVH QUEEN 1022 37S

RU 20X GALAXY 58G REMITALL KEYNOTE 20X  
 GHC MISS GALAXY ET 208Z {DLF HYF IEF} RU 10A ELM 57E  
 CARLSONS KATHY D2 CARLSONS NEW IDEA B46  
 MEL-JON 680K ROSEANNE 18R

EPDS: BW: 2.7 // WW: 60.9 // YW: 93.4 // MM: 31.4 // TM: 61.9

We are really impressed with our first set of calves off of 11G as they are all very consistent with style, shape and overall performance.

As always Schwarzkopf calves are a favorite around here. The females have become great cows with nice udders. Unfortunately due to an injury we no longer have Schwarzkopf therefore his progeny will be limited.



## REFERENCE SIRES

## AIRRIESS ACRES



**Ref D TH MASTERPLAN 183F**

PC03081319	10/10/2018	183F	POLLED
------------	------------	------	--------

SCHU-LAR 5N OF 9L 3008  
 SCHU-LAR 208 OF 1H 121 ET  
**KCF BENNETT STRATEGY Z303 ET**  
 KCF MISS REVOLUTION X338 ET

HUTH PROSPECTOR K085  
 FTF CHICK A BOOM 7227T  
**TH 512X 145Y DOMINETTE 57B**  
 DRF JWV PRINCEVICTOR 71  
 TH 122 711 DOMINETTE 512X ET  
 KBCR 19D DOMINETTE 122

FTF PROSPECTOR 145Y  
**TH 512X 145Y DOMINETTE 57B**  
 TH 122 711 DOMINETTE 512X ET

EPDS: BW: 0.7 // WW: 60.7 // YW: 112.6 // MM: 28.9 // TM: 59.3

**Ref E BOYD 31Z BLUEPRINT 6153 {MDF}**

C03053820	04/10/2016	6153	POLLED
-----------	------------	------	--------

HYALITE ON TARGET 936  
**R LEADER 6964**  
 R MISS REVOLUTION 1009

SCHU-LAR ON TARGET 22S  
 HYALITE'S LASS 310  
 MSU TCF REVOLUTION 4R  
 R MISS WRANGLER 3007

NJW 73S M326 TRUST 100W ET  
**NJW 91H 100W RITA 31Z ET**  
 REMITALL RITA 91H

KCF BENNETT 3008 M326  
 NJW P606 72N DAYDREAM 73S  
 FELTONS 517  
 REMITALL FLORAL RITA 102F

EPDS: BW: 0.9 // WW: 59.5 // YW: 93.4 // MM: 25.9 // TM: 55.7

**Ref F BG LCC 11B PERFECTO 84F {DLF, HYF, IEF, MSUDF, MDF} (P43892306)**

P43892306	22/03/2017	AKJA 125E	POLLED
-----------	------------	-----------	--------

NJW 98S R117 RIBEYE 88X ET  
**LCX PERFECTO 11B ET {DLF, HYF, IEF, MSUDF}**  
 WLL ZOEY 3Z

SHF RIB EYE M326 R117  
 NJW 9126J DEW DOMINO 98S  
 TH 122 711 VICTOR 719T  
 WLL VENUS 19X

NJW 73S M326 TRUST 100W ET  
**BG 100W NICKY 31C {DOD, DLF, HYF, IEF, MSUDF, MDF}**  
 BG MS DOMINO 90Z

KCF BENNETT 3008 M326  
 NJW P606 72N DAYDREAM 73S  
 UPS DOMINO 9014  
 MS CAVE 828

EPDS: BW: -0.2 // WW: 68 // YW: 112 // MM: 38 // TM: 72

**Ref G GHC C5 ATTENTION 155E {DLF HYF IEF MSUDF}**

PC03037388	03/07/2017	AKJA 155E	POLLED
------------	------------	-----------	--------

GV CMR X151 MR 847 Z210  
**SHF CANNON Z210 C9S**  
 SHF MISTY 33T Y35

F REST EASY 847  
 GRANDVIEW CMR MS 424 X151 ET  
 LOEWEN M326 SIR 33T  
 HVH QUEEN 1022 37S

NJW 100W FOUNDATION 54Z ET  
**GHC C5 MISS DUCHESS 58C**  
 GHC MISS UNIQUE 25Z

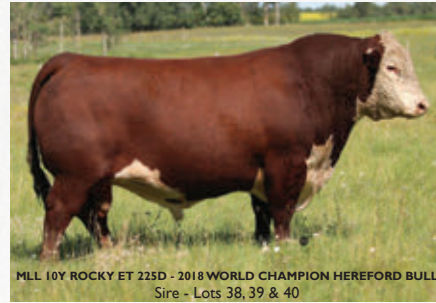
NJW 73S M326 TRUST 100W ET  
 NJW 25C 1A VACA 12E  
 BBSF 101N WRANGLER 29W  
 GHC MISS NANCY 80P

EPDS: BW: 2.0 // WW: 54.8 // YW: 80.4 // MM: 27.0 // TM: 54.4





# HMS HI-CLIFFE



## Lot 38 HMS HI-CLIFFE 225D HANNAH 10H {MDC}

PC03072137	02/03/2020	HMS 10H	POLLED
NJW 73S W18 HOMETOWN 10Y ET		SHFWONDER M326 W18 ET	
<b>MLL 10Y ROCKY ET 225D (DLF HYF IEF MSUDF MDC)</b>		NJW P606 72N DAYDREAM 73S	
MJT MISS POLLY 125S		REMITALL PILGRIM 93P	
		MJT MISS 7M MERLIN 225P	
BBSF 10INWRANGLER 29W		BLAIR-ATHOL 13K MAJOR 101N	
<b>HMS HCF 29W BLUE DIAMOND 170B (DLF HYF IEF MSUDF)</b>		BBSF 19D UNIQUE 1P	
SHPH 66W CLARETTE 170Z		SHPH 274S BARON 66W	
		SHPH 8M CLARETTE 18U	
EPDS: BW: 2.0 // WW: 42.9 // YW: 76.9 // MM: 21.4 // TM: 42.9			

**BW: 78 lbs.**  
**Bonanza 2021 class winner.** Hannah has tonnes of depth and rib shape. She has her sire's eye appeal and structure. Hannah's Dam placed 3rd in CWA, and her maternal brother, Everest 10E, also placed 3rd in CWA and was successfully used as our heifer bull.  
**AI Bred to TH BIG COUNTRY 537G ET on April 24th, 2021.**



## Lot 39 HMS HI-CLIFFE 225D JACKLYN 17J

PC03083198	23/01/2021	HMS 17J	POLLED
NJW 73S W18 HOMETOWN 10Y ET		SHFWONDER M326 W18 ET	
<b>MLL 10Y ROCKY ET 225D (DLF HYF IEF MSUDF MDC)</b>		NJW P606 72N DAYDREAM 73S	
MJT MISS POLLY 125S		REMITALL PILGRIM 93P	
		MJT MISS 7M MERLIN 225P	
CRR 719 CATAPULT 109		TH 122 711 VICTOR 719T	
<b>HMS HI-CLIFFE 109 GODIVA 71G</b>		CRR 4037 ECLIPSE 808	
XLP 145X SAPHIRE 71A		XLP 134S DIESEL 145X	
		XLP 61P SAPHIRE 7T	
EPDS: BW: 1.1 // WW: 48.5 // YW: 79.3 // MM: 28.0 // TM: 52.3			

**BW: 70 lbs.**  
 Jacklyn 17J has the attractiveness of a show prospect written all over her. She is big middled, smooth fronted, and well balanced. Her two year old dam has a fantastic udder and the pair was considered a show prospect this summer.



## Lot 40 HMS HI-CLIFFE 225D JACKLYN 37J

PC03083201	26/01/2021	HMS 37J	POLLED
NJW 73S W18 HOMETOWN 10Y ET		SHFWONDER M326 W18 ET	
<b>MLL 10Y ROCKY ET 225D (DLF HYF IEF MSUDF MDC)</b>		NJW P606 72N DAYDREAM 73S	
MJT MISS POLLY 125S		REMITALL PILGRIM 93P	
		MJT MISS 7M MERLIN 225P	
HAROLDSON'S WLC RENO ET 15W		HARVIE RAFTSMAN 16R	
<b>HAROLDSON'S JANE 15W 37B</b>		HAROLDSON'S 37H MIRA ET 62K	
HAROLDSONS JANE T100 91Z		SHFTAHOE R117 T100	
		HAROLDSON'S JANE 29R 54W	
EPDS: BW: 1.6 // WW: 53.3 // YW: 91.8 // MM: 26.7 // TM: 53.4			

**BW: 86 lbs.**  
 Jacklyn 37J has an impressive structure and presence, powerful yet classy. She is an easy doing calf with a truck load of dimension and maternal punch. Her dam is a moderate framed cow with a powerful udder, who has produced our top sale prospect each year



# Lot 41 PICK OF OUR 2021 HEIFER CALVES



Miss Hollie 18J is my pick of our 2021 heifer calf crop! 18J is maybe my favorite but you have until December 1, 2021, to choose from the **40 heifers** that are sired by: GHC C5 Attention 155E, Innisfail 4013 and GHC Delegate 163F.



## CRITT MISS HOLLIE 18J {DLF HYF IEF MSUDF}

PC03081624	29/01/2021	AKJA 18J	POLLED
EFBEEF TFL U208 TESTED X651 ET <b>INNISFAIL WHR X651/723 4013 ET</b> INNISFAIL P230 T723	EFBEEF FOREMOST U208 EFBEEF P606 MABEL R415 EF F745 FRANK P230 INNISFAIL 235 R501 ET	KCF BENNETT REVOLUTION X51 KCF MISS M326 T56 GHC MONOPOLY 162Z GHC C5 MISS UNIQUE 187Z	
KCF BENNETT IMPACT B451 <b>GHC C5 MISS LEGEND 169E</b> GHC C5 MISS BEAUTY 134C			
EPDS: BW: 2.9 // WW: 62.9 // YW: 100.4 // MM: 24.9 // TM: 56.4			

## Lot 42 CRITT MISS RITA ET 24J {DLF HYF IEF MSUDF}

PC03083006	01/02/2021	AKJA 24J	POLLED
KCF BENNETT ENCORE Z311 ET <b>NJW 79Z Z311 ENDURE 173D ET</b> BW 91H 100W RITA 79Z ET	SCHU-LAR ON TARGET 225 KCF MISS REVOLUTION X338 ET NJW 73S M326 TRUST 100W ET REMITALL RITA 91H	BBSF 101NWRANGLER 29W <b>GHC MISS UNIQUE 56A</b> GHC MISS JUNE 15T	
	BLAIR-ATHOL 13K MAJOR 101N BBSF 19D UNIQUE 1P GLENLEES CL 300M BUICK 162R GHC MISS NANCY 49P		
EPDS: BW: 2.8 // WW: 60.2 // YW: 101.1 // MM: 29.1 // TM: 59.2			

She is a really nice calf that didn't cooperate in the picture pen. Her donor mother has produced several high selling bulls for us. We have a full sister retained and a full brother that will be used here in 2022!



42



# CRITTENDEN LAND & CATTLE



43

## Lot 43 CRITT MISS QUEEN 30H {DLF HYF IEF MSUDF}

PC03071062	18/02/2020	AKJA 30H	POLLED
SHF CANNON Z210 C95	GV CMR X151 MR 847 Z210		
<b>GHC C5 ATTENTION 155E {DLF HYF IEF MSUDF}</b>	SHF MISTY 33TY35		
GHC C5 MISS DUCHESS 58C	NJW 100W FOUNDATION 54Z ET		
	GHC MISS UNIQUE 25Z		
LOEWEN GHCTOP CHIEF B64 ET	LOEWEN M326 SIR 33T		
<b>GHC MISS JACKLYN 12E</b>	PCR JACKLYN NIKOLE 344N		
PCL MISS DEW 25Z 1B	PCL ZIRCON 719T 25Z		
	GHC EB MISS DEW 74Y		

EPDS: BW: 2.6 // WW: 60.8 // YW: 92.7 // MM: 22.8 // TM: 53.2

Here is a big broody Attention daughter. Attention saw heavy service here this year. 30H is bred to our pick of the McCoy's bulls this spring, McCoy 147E Compass ET 31H.  
**AI bred to MCCOY 147E COMPASS ET 31H April 18, 2021. Exposed to GHC ROOTS 161F May 6 - July 6, 2021**  
**Preg checked safe to MCCOY 147E COMPASS ET 31H.**

## Lot 44 CRITT MISS MAPLE 31H {DLF HYF IEF MSUDF}

PC03071056	19/02/2020	AKJA 31H	POLLED
SHFTAHOE R117T100	SHF RIB EYE M326 R117		
<b>ANL C HART 100TAHOE 86 ET 23B {DLF HYF IEF MSUDF MDF}</b>	SHF LADY 512 L73		
ANL 7N MAPLE 86R	ANL 2K SPECIALIST 7N		
	ANL 32K MAPLE 47N		
TH 89T 743 UNTAPPED 425X ET	CRR ABOUT TIME 743		
<b>ANL 425X ELSIE 58A 51D</b>	TH 16G 20N GEMINI 89T		
ANL 17U ELSIE 58A	ANL P606 UNIVERSE ET 17U		
	ANL 409W ELSIE 80Y		

EPDS: BW: 5.3 // WW: 55.6 // YW: 94.0 // MM: 16.7 // TM: 44.5

This is a really sharp heifer. Her sire Tahoe has been our most consistent sire of bulls and females. Her mother and full sister are both very good.  
**Exposed to GHC C5 ATTENTION 155E from April 20 - May 15, 2021.**  
**Exposed to GHC ROOTS 161F from June 3 - July 6, 2021.**  
**Due early to GHC CS ATTENTION 155E.**



44



# CRITTENDEN LAND & CATTLE

## Lot 45 CRITT FORMATION 68J {DLF HYF IEF MSUDF}

PC03081619 20/02/2021 AKJA 68J HOMO POLLED

EFBEEF TFL U208 TESTED X651 ET  
**INNISFAIL WHR X651/723 4013 ET {MDF}**  
 INNISFAIL P230 T723

EFBEEF FOREMOST U208  
 EFBEEF P606 MABEL R415  
 EF F745 FRANK P230  
 INNISFAIL 235 R501 ET

SHF CANNON Z210 C95  
**GHC MISS BARBIE 109E {DLF HYF IEF MSUDF}**  
 LAMPOR'T'S 82W VICTORIA 42Z

GV CMR X151 MR 847 Z210  
 SHF MISTY 33TY35  
 BAR-H CHALLENGER 82W  
 LAMPOR'T'S 75U VICTORIA 49X

EPDS: BW: 3.5 // WW: 62.8 // YW: 99.7 // MM: 22.0 // TM: 53.4

BW 94 lbs.

68J is in the top 1% of the breed for marbling and the top 2% for FMI. 100% pigment on both eyes. Extra dimension from any angle. The 4013 cattle have been topping sales in the USA the last couple of years. Look at his mother then think of what he could produce! Retaining half semen interest.



## Lot 45A GHC MISS BARBIE 109E {DLF HYF IEF MSUDF}

PC03033619 06/03/2017 AKJA 109E POLLED

GV CMR X151 MR 847 Z210  
**SHF CANNON Z210 C95**  
 SHF MISTY 33TY35

F REST EASY 847  
 GRANDVIEW CMR MS 424 X151 ET  
 LOEWEN M326 SIR 33T  
 HVH QUEEN 1022 37S

BAR-H CHALLENGER 82W  
**LAMPOR'T'S 82W VICTORIA 42Z**  
 LAMPOR'T'S 75U VICTORIA 49X

NJW 45P 139J FULL TANK 134S  
 KRI RENEGRAD 27N  
 LAMPOR'T'S 21N REDEYE 75U  
 LAMPOR'T'S 87N VICTORIA 46T

EPDS: BW: 2.9 // WW: 48.6 // YW: 75.8 // MM: 24.2 // TM: 48.5

Some of our best and most proven genetics here. Look at her herd bull at side! Reserving the right to flush in the Spring of 2022.

AI bred to **INNISFAIL WHR 723 4013 ET May 4, 2021**

Exposed to **SHF HORIZON 0287 H) ET May 24 - July 6, 2021**

Preg checked safe to **INNISFAIL WHR 723 4013 ET on May 4, 2021.**







**REMITALL-W RIO LOBO ET 26C**  
Sire - Lot 46

*Lot 46* **ROCK-N-ROLL KISSES MIST 12H**

C03081201	18/12/2020	KRS 12H	POLLED
NJW 73S W18 HOMETOWN 10Y ET	SHF WONDER M326 W18 ET		
<b>REMITALL-W RIO LOBO ET 26C (DLF HYF IEF MSUDF MDC)</b>	NJW P606 72N DAYDREAM 73S		
REMITALL MARVEL 78T	REMITALL PATRIOT ET 13P		
	REMITALL MAVREL 105N		
	HARVIE TRAVELER 69T		
OVHF DESTINATION ET 2Y	GHC MISS CARLSON 78M		
<b>ROCK-N-ROLL KOZIE 12B</b>	CS BOOMER 29F		
TALECO 29F 81W KIM 12M	TALECO 81W KELLY 16F		

EPDS: BW: 3.1 // WW: 53.2 // YW: 86.6 // MM: 23.9 // TM: 50.5

This heifer calf is a deep bodied wide topped individual. She is a top end female sired by the Remitall West sale high seller Rio Lobo.



**NJW 73S M326 TRUST 100W ET**  
Sire - Lot 47

*Lot 47* **ROCK-N-ROLL LOOT 182H**

C03081816	20/12/2020	KRS 182H	POLLED
KCF BENNETT 3008 M326	RRH MR FELT 3008		
<b>NJW 73S M326 TRUST 100W ET (DLF HYF IEF)</b>	KCF MISS 459 F284		
NJW P606 72N DAYDREAM 73S	PVV VICTOR BOOMER P606		
	NJW 94J DEW 72N		
	THM DURANGO 4037		
CRR ABOUTTIME 743	CRR D03 CASSIE 206		
<b>ROCK-N-ROLL LOTZA 82F</b>	HARVIE KEYNOTE 127A		
ROCK-N-ROLL LUCYNDA ID	MICGIL'S RAY-LYN 59P 56W		

EPDS: BW: 1.8 // WW: 55.8 // YW: 93.0 // MM: 28.6 // TM: 56.5

If you are looking for a stylish daughter of National Champion NJW Trust then take a look here. She might be the flashiest calf I have raised in years. An added benefit is she has industry leading EPD's.

## Terms and Conditions

**Terms:** The terms of the sale are cash or cheque, payable at par at sale location. The right of property shall not pass until after settlement has been made; no invoicing on buyers in attendance unless previous arrangements have been made. Every animal sells to the highest bidder and in cases of disputes, the auctioneer's decision will be final. Announcements from the auction block will take precedence over the printed matter in the catalogue. Current exchange rates will be announced sale day. All monies are in Canadian funds.

**Certificate of Registration:** Each animal will carry papers issued by the Canadian Hereford Association. A certificate of registry duly transferred will be furnished to the buyer for each animal after payment has been made.

**Pedigree Estimates:** Pedigree Estimates (PE) are created on the projected mating of the animal's sire and dam based on averages of the two, creating estimated values that do not hold the same accuracy of actual EPDs issued from the association and should be used as such.

**Health:** All animals in the sale have met all necessary health requirements.

**Guarantee:** Each animal becomes the purchaser's risk immediately after the animal is sold. All animals in this sale will be sold under the terms and guarantees set forth by the Canadian Hereford Association with regards to health, freedom from defects and from both reproductive and specific genetic unsoundness.

**Pregnancy Information:** All serviceable age females have been pregnancy examined by an accredited veterinarian.

**International Buyers:** Cattle or genetics sold to buyers outside of Canada may require export permits and health certificates. The buyer will be responsible for the costs in producing these export documents.

**Liabilities:** All persons attend the sale at their own risk. The seller, facility owner and sale manager assume no liability, legal or otherwise, for any accidents that occur. It is understood that T Bar C Cattle Co. (2013) Ltd. is acting only as a medium between buyer and seller and is not responsible for any failure on the part of either party to live up to his obligations. Neither does T Bar C Cattle Co. (2013) Ltd. assume any financial obligations to collect or enforce collection of any monies between parties and any legal action that may, in exceptional cases, be taken must be between the buyer and the seller. T Bar C Cattle Co. (2013) Ltd. assumes no responsibility for any credit extended by the seller to the buyer. The buyer must look to the seller for fulfillment of all guarantees and representations made hereunder.

**Delivery:** Assistance will be given in getting your purchases home. Each animal becomes the risk of the purchaser as soon as sold.

**Phone, Mail, Wire Bids:** Bidders unable to attend the sale may phone, wire or mail their bids and instructions to the sale manager, auctioneer or special representatives. Bids must be received in sufficient time prior to the sale.

**Insurance:** We strongly recommend that insurance is purchased for full value.



# Consignors

## Lone Pine Cattle Services.....Lots 1-22

Rob & Dawn O'Connor & Family  
Box 158  
Vibank, SK S0G 4Y0  
Rob's cell: 306-550-4890  
roconnor@aginmotion.ca  
www.lonepinecattle.net

## Crittenden Land & Cattle.....Lots 41-45A

Crittenden Land & Cattle  
Howard and Sharon: 306-963-2414  
Howard's Cell: 306-963-7880  
Jim and Kari: 306-220-1229  
Grant and Lindsay: 306-917-7782  
h.s.crittenden@sasktel.net

## Airriess Acres.....Lots 23-37

Trevor & Sara Airriess  
Box 1073  
Wadena, SK S0A 4J0  
Trevor's Cell: 306-338-7753  
Sara's Cell: 306-338-8310  
airriessacres@hotmail.com

## Rock-N-Roll Polled Herefords.....Lots 46-47

Paul Kress  
Box 53  
Kendal, SK S0G 2P0  
306-424-2760

## HMS Hi-Cliffe.....Lots 38-40

The Millham Family  
Hunter, Morgan & Sydney  
Carmen & Brenda Millham  
Box 382 Outlook, SK S0L 2N0  
Carmen: 306-867-4231  
Brenda cell: 306-270-5524  
carm.dvm@sasktel.net | www.hmshiccliffe.com





Return Undeliverable  
Canadian Addresses

T Bar C Cattle Co. Ltd.  
Box 2330  
Warman, SK S0K 4S0



Set your goals high  
and get on your tip  
toes if you have to

